

# Nano SPY TH

Mini Temperature & Hygrometry Data logger  
2,4GHz radiofrequency communication



Non contractual photo

## Presentation

The Nano SPY TH sensor measures, records temperature and hygrometry. It transmits data to a nearby LINK module, by 2.4 GHz radiofrequency communication.

The measurements are then sent automatically to the JRI secure Cloud for hosting, and will be managed on JRI MySirius web application.

If thresholds are exceeded, alerts are transmitted in real time to react immediately.

Discreet, it is particularly suitable for climate comfort and HVAC applications.

## Technical features

Interface	Status LED and On/Off touch sensitive button
Measurement range	-30°C to +70°C and 0 -100% RH*
Accuracy	<b>Temperature</b> : ±0.4°C from -20°C to +40°C and ±0.5°C out of this range <b>Hygrometry between +15°C and +25°C</b> : ±3% RH from 20% to 80% and ±5% RH out of this range
Communication frequency	2,4 GHz (802.15.4)
Memory	10 000 data points
Sensor	SENSIRION SHT25 digital
Operation conditions	-30°C to +70°C
Resolution	0.01
Measuring and transmission period	1mn
Internal memory recording period	Adjustable from 1 mn to 24 hrs
Response time $\sigma_{90}$	~2 mn
Protection	IP40
Case	Polycarbonate – Food contact
Power supply	3,6v Lithium battery - Replaceable
Battery life	6 years
Dimensions and weight	63 x 42 x 25 mm / ~ 60 g
Fixation	Fixing eyelets and integrated magnets
Supplied with	White identification ring user manual can be download on <a href="http://www.jri-corp.com">www.jri-corp.com</a>
Compliance	CE, ROHS, FCC, ETS 300-328, EN 12830
Standard calibration points	+2°C/ +22°C/ +38°C and 20%/ 50%/ 80%

## Benefits

- **Easy-to-use**  
The sensor is ready to use and has operating and alarm lights



- **Excellent measurement accuracy**



Fixing eyelets

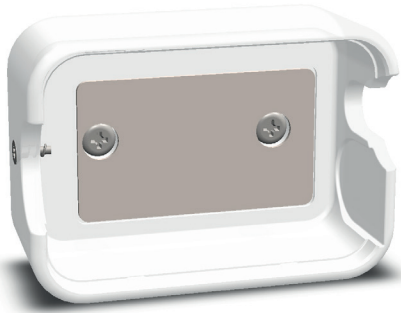


Replaceable battery

PART NRS  
11568 2E : Nano SPY TH  
11568 2X : Nano SPY TH (without battery)

\*For humidity, continuous normal use between 20% and 80%RH. Use a maximal 60-hour period to guarantee accuracy out of this range.

## Accessories



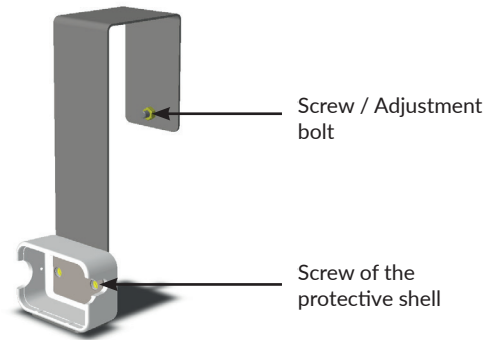
**Protective shell**  
*Part nr. 12715*

### Protective shell

The protective shell is used to protect all Nano SPY mini-data loggers from shocks.

It is supplied with a double-sided adhesive to be glued to all surfaces and an anti-theft screw for the Nano SPY.

It can also be screwed (screws not supplied).



**Caliper for protective shell**  
*Part nr. 12716*

### Caliper for protective shell

The caliper is designed for the fixing of a protective shell of Nano SPY on cabinets with horizontal opening to facilitate cleaning operations.

The caliper can be mounted on 65mm wide walls (without the screw + adjustment bolt).

The protective shell of Nano SPY can be directly glued to the bottom of the bracket and/or fixed with screws (provided).